

Cancellations and Transfers

No refunds will be given in the case of cancellations. Once enrolment has been made, a transfer may only happen subject to space availability and payment of the transfer fee.

Candidates who are unable to present themselves for their exams must notify the AMEB forthwith, and at least 48 hours before the exam in order to be eligible for transfer concessions.

Where a cancellation is undertaken on medical grounds, a credit note for half the grade fee will be issued if a current medical certificate [max. 2 weeks old] is supplied to the AMEB office within five (5) working days of the exam date.

Please contact the office regarding Grade Medical Transfer fees and procedures. Charges apply.

Transfers from one examination year to the next are not possible.

Complaints

All complaints must be lodged in writing and include a copy of the report form.

Reassessment

Reports submitted for reassessment must be accompanied by a reassessment fee of \$37. Reassessment applies to completed reports only, and does not constitute resitting the exam.

Service Charges – GST inclusive

Late Fee:		\$35 per candidate (max \$100)
Grade Transfers:		\$40
Grade Medical Transfers:		Contact office
Diploma Transfers (including Medical):		\$50
Amendments:	Grade:	\$15
	Subject:	\$15
Duplicates:	Notice:	\$3
	Report or Certificate:	\$15
Searches (past results):	before 1985:	\$15 per year
	1985 and after:	\$15
Statement of passes:		\$15 + Search Fee
Detailed Report (Written):		\$37
Reassessment of Report:		\$37

AMEB Manuals of Syllabuses – Music and Speech

The method of delivery of these Manuals and individual instrument syllabuses is changing. For more information on how to purchase these Manuals and individual instrument syllabuses and the costs involved contact the AMEB(WA) State Office.

AMEB

Additional postage charges may apply; please contact the State Office.

Please note

This document, together with the 2014 *Manual of Syllabuses*, forms part of the examining procedures. Teachers are therefore asked to ensure that parents and candidates are fully aware of the information contained herein.

2014 Examination Enrolments in Western Australia Enrolments

The details you provide on the enrolment form will appear on all AMEB documentation including the certificate. It is the responsibility of the person making the enrolment to check that all the following details are correct:

Name
Date of Birth
Gender
Subject Code
Subject/Discipline
Grade
Indicate New (N) or Old (O) syllabus where applicable
Preferred week for examination – Week number only (specific days/dates/ times entered in place of a week number will not be accepted).

The Candidate's Date of Birth forms part of the Candidate Number, and assists the AMEB in allocating appropriate examiners. It also provides the AMEB with statistical information necessary to better adapt its services to market needs.

Teachers must, when making entries, ensure that candidates are available anytime in the selected week. Requests cannot be guaranteed. Transfer charges remain the responsibility of the person making the enrolment.

Late Enrolments

Enrolments made later than the published closing date may still be accepted subject to space availability and payment of the stipulated late fee (\$35 per candidate). For enrolments by mail, the postmark will be taken as the day of enrolment. The AMEB will not be held responsible for delays of enrolments forwarded by mail, or other delays outside its control including the non-arrival of faxed enrolments, and no discussion will be entered into.

Notice

If an exam Notice of Examination is missing or contains incorrect details, please notify the AMEB immediately.

AMEB OFFICE HOURS:

Monday to Friday 9am to 1pm and 2pm to 4.30pm

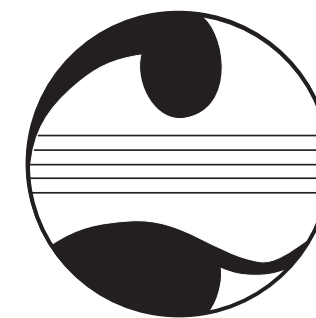
TEL: (08) 6488 3059

FAX: (08) 6488 8666

Errors caused by the AMEB will then be corrected. If details were wrongly supplied, you will be asked to supply the amendment in writing. Certain amendments incur a service charge. Please refer to the table of charges for information.

Any error which is not corrected will remain on record as shown. Please note that alteration of the Certificate after it has been produced will incur an amendment fee of \$15 irrespective of the type of amendment and how the error occurred.

The AMEB will not be held responsible for delays of certificates forwarded by mail, or any other delays outside of its control.



Australian

Music

Examinations

Board (WA)

State Office (Perth)

Mailing Address:

AMEB (WA),
M421, 35 Stirling Hwy, Crawley WA 6009

Tel: (08) 6488 3059

Fax: (08) 6488 8666

Email: amebwa@uwa.edu.au

Internet: www.ameb.uwa.edu.au

Location only:

Building 1, UWA Claremont Campus,
Cnr Princess and Goldsworthy Roads, Claremont

OFFICE HOURS

Monday to Friday

9am to 1pm and 2pm to 4.30pm

Please note

This document, together with the 2014 *Manual of Syllabuses*, forms part of the examining procedures. Teachers are therefore asked to ensure that parents and candidates are fully aware of the information contained herein.

FEES 2014

MUSIC (includes CPM Keyboard)

Practical Grade Examinations		Written Exams Music Craft / Theory / Musicianship	
GST incl.		GST incl.	
Preliminary	\$77	Preliminary	\$58
First	\$82	First	\$60
Second	\$91	Second	\$63
Third	\$97	Third	\$65
Fourth	\$102	Fourth	\$69
Fifth	\$109	Fifth	\$74
Sixth	\$120	Sixth	\$79
Seventh	\$129	Seventh – Paper 1	\$87
		Seventh – Paper 2	\$87
Eighth	\$146	Eighth	\$101
Certificate of Performance	\$168	Associate – Paper 1	\$108
Associate Diploma	\$280	Associate – Paper 2	\$108
Licentiate Diploma	\$378	Licentiate – Paper 1	\$132
CTMUSA Section 11	\$117	Licentiate – Paper 2	\$132
CTMUSA Section 111a	\$172	Licentiate – Paper 3	\$132
CTMUSA Section 111b	\$172	CTMUSA	\$117
ATMUSA Section 11	\$117	ATMUSA	\$117
ATMUSA Section 111a	\$194		
ATMUSA Section 111b	\$194		

FOR P PLATE PIANO, ON-LINE WRITTEN, INDUCTION TESTS AND PERFORMANCE EVALUATION INFORMATION INCLUDING FEES PLEASE CONTACT THE OFFICE OR VIEW THE WEBSITE.

SPEECH

Drama and Performance		Voice and Communication (per candidate)	
GST incl.		GST incl.	
Preliminary	\$73	Preliminary	\$70
First	\$77	First	\$72
Second	\$79	Second	\$74
Third	\$86	Third	\$84
Fourth	\$90	Fourth	\$86
Fifth	\$93	Fifth	\$88
Sixth	\$98	Sixth	\$96
Seventh	\$102	Seventh	\$99
Eighth	\$111	Eighth	\$110
Certificate	\$140	CVCA	\$131
Associate (ADPA) Diploma	\$250	AVCA section I	\$210
Associate Written	\$115	AVCA section II	\$120
Licentiate (LDPA) Diploma	\$300		
Licentiate Written	\$115		

Speech and Performance Written		Drama and Communication (per candidate)	
GST incl.		GST incl.	
First	\$60	Introductory	\$22
Second	\$62	First	\$22
Third	\$64	Second	\$27
Fourth	\$67	Third	\$27
Fifth	\$70	Fourth	\$27
Sixth	\$74	Fifth	\$30
Seventh	\$86	Sixth	\$30

ALL FEES ARE GST INCLUSIVE

AMEB Instrumental, Singing and Speech Examinations 2014 (Pianoforte and Piano for Leisure Exams will be conducted every week)

April CLOSING DATE 4 MARCH	May CLOSING DATE 1 APRIL	June CLOSING DATE 1 MAY	July CLOSING DATE 3 JUNE	August CLOSING DATE 1 JULY	September CLOSING DATE 1 AUGUST	October CLOSING DATE 1 SEPTEMBER	November CLOSING DATE 24 SEPTEMBER
Week 14	Week 19	Week 23	Week 28	Week 32	Week 36	Week 41	Week 45 A
(Tues) 1 – 5 April Violin, Viola, Violoncello	5 – 10 May Violin, Viola, Guitar	2 – 7 June Violin, Viola, Violoncello No Exams on Monday WA Day	7 – 12 July School Holidays	4 – 9 August Violin, Viola, Violoncello	1 – 6 September Violin, Viola	6 – 11 October CPM School Holidays	3 – 8 November Clarinet, Saxophone, Singing, Speech
Week 15	Week 20	Week 24	Week 29 A	Week 33	Week 37	Week 42	Week 46
7 – 12 April Flute, Recorder, Singing, Brass	12 – 17 May Flute	9 – 14 June Flute, Recorder, Brass	14 – 19 July CPM School Holidays	11 – 16 August Flute, Singing, Brass	8 – 13 September Flute, Recorder, Guitar, CPM	13 – 18 October Flute, Guitar, Brass	10 – 15 November Flute, Recorder, Guitar, Brass, Speech
Week 16	Week 21	Week 25	Week 30	Week 34	Week 38	Week 43	Week 47
14 – 19 April School Holidays No Exams on Good Friday or Easter Saturday	19 – 24 May Brass, Speech	16 – 21 June Guitar, Singing, Speech	21 – 26 July Flute, Singing, Guitar	18 – 23 August Written Exams^o Piano Exams Friday and Saturday 22 and 23 only	15 – 20 September Clarinet, Saxophone, Singing, Speech	20 – 25 October Clarinet, Saxophone, Singing, Speech	17 – 22 November Violin, Viola, Violoncello, Speech
Week 17 A	Week 22	Week 26	Week 31 *	Week 35	Week 39	Week 44 *	Week 48 A
21 – 26 April CPM School Holidays No Exams on Easter Monday or ANZAC Day Friday	26 – 31 May Clarinet, Saxophone Bassoon, Oboe	23 – 28 June Clarinet, Saxophone	28 July – 2 August Clarinet, Saxophone, Bassoon, Oboe <i>*Split Week</i>	25 – 30 August Speech, Clarinet, Saxophone	22 – 27 September Violin, Viola, Brass, Speech	27 Oct – 1 November Violin, Viola, Violoncello, Bassoon, Oboe, Speech <i>*Split Week</i>	24 – 29 November
Week 18 *		Week 27 *	Country Exams Closing Date is Friday 27 June (Not applicable to Bunbury)		Week 40 * A		November Exams (as above only) Closing Date is 24 September
28 April – 3 May Clarinet, Saxophone <i>*Split Week</i>		30 June – 5 July Violin, Viola <i>*Split Week</i>			29 Sep – 4 October School Holidays No Exams on Monday Queen's Birthday <i>*Split Week</i>		

Practical Exams – Closing Dates:
PLEASE NOTE THAT EACH COLUMN OF WEEKS BELONGS TO THE MONTH STATED AT THE TOP OF THE COLUMN. THE CLOSING DATE FOR THAT SET OF WEEKS (MONTH) IS ALSO STATED AT THE TOP OF THE COLUMN.

NOVEMBER CLOSING DATE 24 SEPTEMBER

Late Enrolments
(POSTED AFTER THE CLOSING DATES STATED ABOVE):
WILL INCUR A LATE FEE OF \$35.

USE POSTAL ADDRESS FOR ALL CORRESPONDENCE.

2014 Written Exams^o
Enrolment Deadlines:
August Only
FRIDAY 6 JUNE

REFER TO THE CURRENT MANUAL OF SYLLABUS FOR DATES/TIMES WITHIN THE WEEK.

Music Craft only available online

CPM
ALL INSTRUMENTS OF CPM WILL BE ASSESSED IN THE WEEKS MARKED CPM. FOR FEE INFORMATION FOR INSTRUMENTS OTHER THAN KEYBOARD REFER TO THE AMEB(WA) WEBSITE SCHEDULE AND FEES PAGE UNDER THE HEADING EXAMINATIONS.

Bunbury Practical Exams
WILL BE HELD IN WEEKS 19, 37 AND 45 FOR PIANOFORTE, PIANO FOR LEISURE AND ALL INSTRUMENTS.

CLOSING DATE AS FOR METROPOLITAN EXAMS.

Associate Diploma Exams
WILL BE CONDUCTED FOR ALL INSTRUMENTS AND SPEECH IN WEEKS MARKED 'A'

Federal Diploma Exams
LMusA and FMusA
CLOSING DATE: FRIDAY 6 JUNE
ONE SESSION OF EXAMS HELD IN LATE SEPTEMBER/EARLY OCTOBER.

CONTACT THE OFFICE FOR MORE DETAILS.

Note:

THESE WEEK NUMBERS DO NOT CORRELATE TO CALENDAR OR SCHOOL TERM WEEKS. PLEASE USE WEEK NUMBERS AS THEY APPEAR IN THIS TIMETABLE.

*** 'SPLIT' WEEK, E.G. WEEK 27* (30 JUNE – 5 JULY) IS DEEMED TO BELONG TO THE EARLIER MONTH, IN THIS CASE JUNE (SO CLOSING DATE IS AS FOR JUNE).**